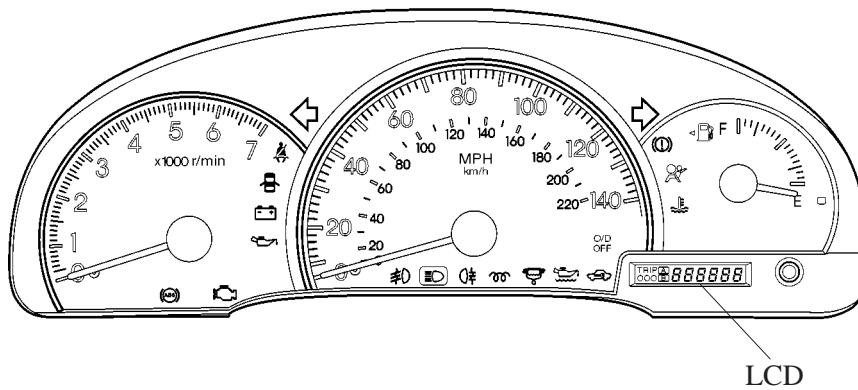


METER

■ COMBINATION METER

1. General

- An analog display type combination meter has been adopted.
- An odometer and trip meter which used LCD (Liquid Crystal Display) has been adopted.
- All the meters, gauges, indicator lights, and warning lights have adopted LEDs (Light Emitting Diodes), and discontinued the use of light bulbs, thus resulting in reduces consumption of electrical energy.
- This combination meter has a built-in buzzer (for Light reminder).
- This conventional water temperature gauge has been discontinued in this combination meter. Instead, and indicator light is used to display the water temperature conditions.

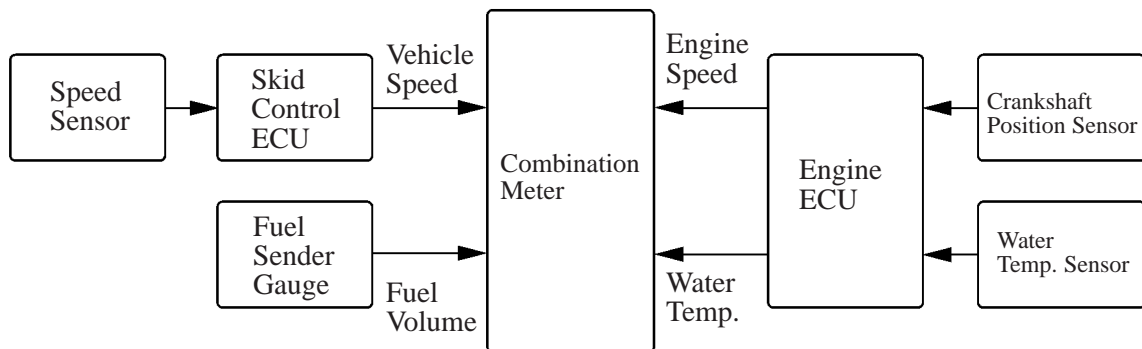


RHD Models for Europe

206BE04

BE

► Main Meter and Gauge Input Signals ◀



206BE05

Service Tip

If the combination meter malfunctions, it must be replaced as a combination meter assembly. Refer to the Avensis Verso/Picnic Chassis & Body Repair Manual (Pub. No. RM864E).

2. Water Temperature Indicator Light

The color and the light condition of this indicator light change in accordance with the water temperature.

| Water Temp (°C) | Color | Light Condition |
|---------------------|----------------|-----------------|
| Below approx. 50 | Blue | Illuminate |
| Above approx. 118.5 | Red | Flash |
| Normal | Not illuminate | |

